

COMFORT



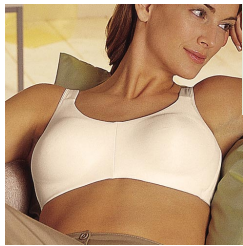
2149 Seamless Soft Cup
34-44A,B; 34-42C; 34-40D
Average fit; Nude, Black

Features a microfiber fabric with 2-way stretch, microfiber pockets, flexible "no roll" front band, flexible side stays and padded straps



2142 Vertical Seam Soft Cup
32-40AA; 34-42A,B; 34-40C
Average fit; Candlelight, Pink, Black

Features figure-enhancing vertical seams, stretch neckline with a lace top cup, foam cup liner, mesh pockets and reinforced sides in the larger sizes



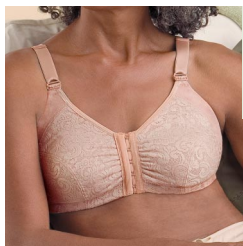
2138 Seamless Soft Cup
34-44A,B; 34-42C; 34-40D
Average fit; Candlelight

Features two layers of smooth fabric covering a fine-velour center, microfiber pockets and wide straps



2132 Lace Leisure Front Closure
S,M,L,XL; Cups A/B, C/D
White

Features overall stretch lace, easy-to-fasten front hooks and cotton pockets to hold the Amoena Fiberfill Leisure Form #2104/2106 and other Amoena silicone forms



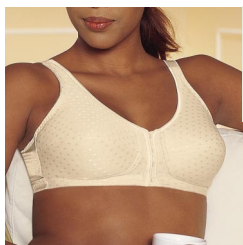
2130 Comfort Care Soft Cup
S,M,L,XL,XXL; Cups A/B, C/D
White, Nude

Features front hook and toggle opening on straps for easy entry, soft cotton fabric with lace cups and cotton pockets to hold the Amoena Fiberfill Leisure Form #2104/2106 and other Amoena silicone forms



2128 Cotton Leisure Front Closure
S,M,L,XL; Cups A/B, C/D
White

Features overall soft cotton, easy-to-fasten front hooks, and cotton pockets to hold the Amoena Fiberfill Leisure Form #2104/2106 and other Amoena silicone forms



2124 Front/Back Closure Soft Cup
34-42A,B; 34-44C,D,DD
Full fit; White, Pearl Beige

Features front and back closures, cotton pockets and lightweight powernet back

BASIC



2148 Soft Cup
32-40A; 34-42B; 34-44C; 36-44D,DD
Average fit; Nude

Features floral jacquard fabric, CoolMax® pockets and powernet back band for extra support



2140 Soft Cup
34-42B,C,D
Average fit; Candlelight

Features stretch lace top cup, an embossed laguna fabric bottom cup, microfiber pockets and wide, cushioned straps



2133 Soft Cup
34-42B; 34-46C,D,DD; 36-42DDD
Full fit; White, Pearl Beige, Black

Features floral jacquard fabric, fiberfill cups, mesh pockets, powernet back for support and set-in comfort straps



2126 Soft Cup
34-38AA; 32-40A,B,C,D,DD
Average fit; White, Pearl Beige, Black

Features stretch lace top cup, an embossed Simplex bottom cup, CoolMax pockets and powernet back for support



2123 Soft Cup
32-38AA; 32-42A; 32-44B; 34-44C;
34-40D
Shallow fit; White, Pearl Beige, Black

Features tailored neckline, embossed print and cotton pockets



2115 Soft Cup
34-52B,C; 34-46D,DD
Full fit; White, Pearl Beige, Black

Features an M-frame design, elastic cup frame for extra support, cotton pockets, rigid straps and a leotard back for a close, comfortable fit



2114 Soft Cup
32-42A; 32-44B; 32-46C; 34-46D;
36-46DD
Average fit; White, Pearl Beige, Black

Features jacquard print, soft fiberfill cups, cotton pockets and reinforced side panels for extra support

FASHION



2244 Underwire
34-40B,C,D,DD
Average fit; Candlelight, Black

Features designer lace top and bottom cup, flex-comfort underwire and mesh pockets. Matching panty style#2544



2544 Panty
S,M,L,XL
Candlelight, Black

Features designer lace. Matching bra style#2244



2242 Underwire
34-46B,C,D,DD,DDD
Full fit; Candlelight, Pink, Black

Features lace top cup, flex-comfort underwire and mesh pockets



2229 Underwire
34-42B; 34-46C,D,DD
Full fit; Candlelight

Features stretch lace top cup, powernet lining, mesh pockets and elastic camisole straps



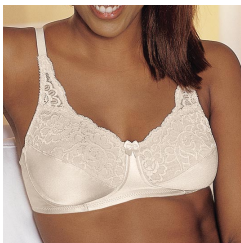
2151 Full-figure Soft Cup
34-42B,C; 34-44D,DD; 36-46DDD
Full fit; Candlelight, Pink, Black

Features lace top cup, smooth bottom cups, mesh pockets and powernet back



2141 Soft Cup
34-40A; 34-42B,C,D
Average fit; Candlelight, Nude

Features stretch lace top cup, scalloped neckline and mesh pockets



2137 Soft Cup
32-40A; 34-40B,C,D
Average fit; Pearl Beige, Black

Features stretch lace top cup, smooth simplex bottom cup, mesh pockets and lightweight powernet back

FASHION



2129 Soft Cup
32-38AA,A; 32-42B; 34-46C,D
Full fit; Candlelight

Features stretch lace top cup, mesh pockets and elastic camisole straps



2125 Soft Cup
34-42B; 34-44C,D
Full fit; Pearl Beige

Features stretch lace top cup, CoolMax pockets, lightweight powernet back and elastic straps.



2118 Camisole Bra
32-38AA; 32-40A,B; 34-40C; 34-38D
Average fit; White, Candlelight, Black

Features stretch lace camisole panel, cotton pockets and a lightweight Lycra® leotard back

ACTIVE



2150 Sports Bra
S, M, L, XL, XXL
Black, Slate Blue

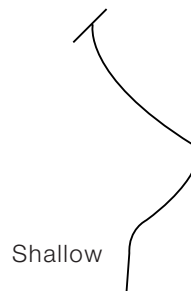
Features moisture management with CoolMax Extreme Performance fabric, racer back, zip front and padded adjustable straps



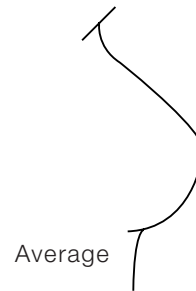
2134 Soft Cup
32-42A,B; 34-40C,D
Average fit; Candlelight

Features lightweight Tactel® fabric, stretch neckline, mesh pockets, powernet back and set-in camisole straps

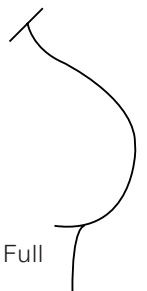
BREAST SHAPES



Shallow



Average



Full

Insist on Amoena / 1-800-741-0078

amoena

Note: On all Amoena intimate apparel, hook and eyes and strap specifications can vary from size to size.